

# J PLANT

Product Catalog







Healthy Smile, Healthy Life



JJ Medical's logo symbolizes our efforts and sincerity in pouring out each implant as small drops of water gather together to create a big wave. And just as the waves don't wet the sand, JJMedical will always be a healthy implant company near our customers.

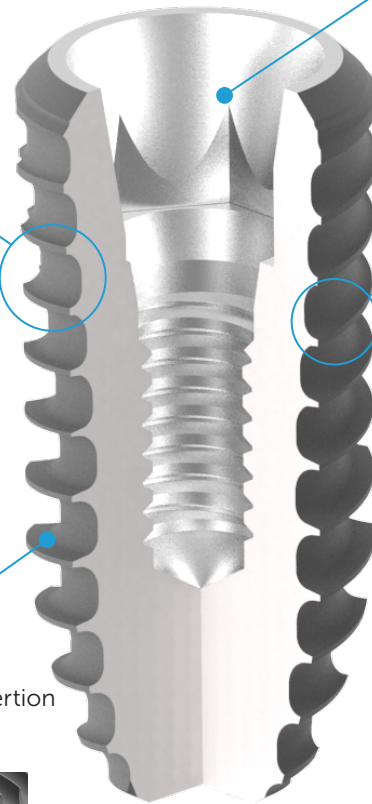
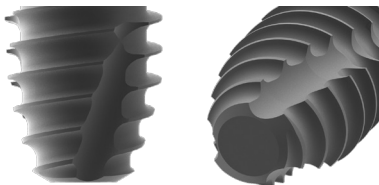


## Innovative Double Thread & Tapered Design

- The high initial fixation force improved the success rate of the immediately loading cases

## Triple Cutting Edge

- By improving the self tapping ability, designed for convenience of dietary fiber and has a soft insertion and high Initial fixation force

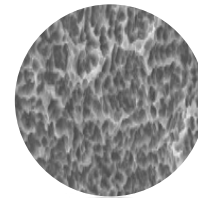


## 11° Tapered Conical Connection

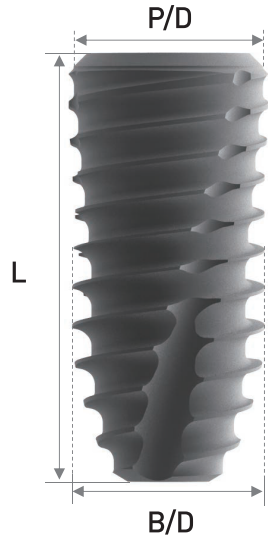
- A single hex connection is used for all Implant diameters
- Highly compatible with 11° conical connection

## S.L.A. Surface Treatment

- Raise the contact rate between bone and implant
- Enhance the rate of osseointegration
- Uniformed distribution of roughness



J Plant Package Box



**JCS20**

• Cover screw is included in the package

## Platform D Ø3.6

Body D Ø 3.6

HEX 2.5



Length	6*	7	8	10	12	14
Product Code	JFT3606	JFT3607	JFT3608	JFT3610	JFT3612	JFT3614

\* Only for export

## Platform D Ø4.0

Body D Ø 4.0

HEX 2.5



Length	6*	7	8	10	12	14
Product Code	JFT4006	JFT4007	JFT4008	JFT4010	JFT4012	JFT4014

\* Only for export

## Platform D Ø4.4

Body D Ø 4.5

HEX 2.5



Length	6*	7	8	10	12	14
Product Code	JFT4506	JFT4507	JFT4508	JFT4510	JFT4512	JFT4514

\* Only for export

## Platform D Ø4.9

Body D Ø 5.0

HEX 2.5



Length	6*	7	8	10	12	14
Product Code	JFT5006	JFT5007	JFT5008	JFT5010	JFT5012	JFT5006

\* Only for export

## Platform D Ø6.0

Body D Ø 5.0

HEX 2.5



Length	6*	7	8	10	12
Product Code	JFT6006	JFT6007	JFT6008	JFT6010	JFT6012

\* Only for export

## Platform D Ø7.0

Body D Ø 5.8

HEX 2.5

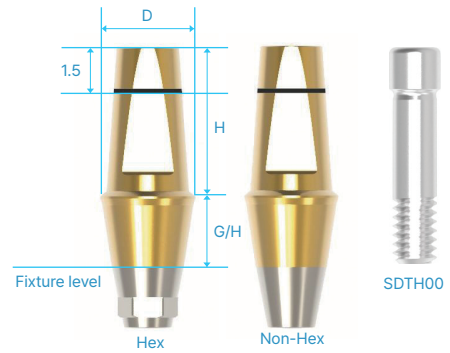


Length	6*	7	8	10	12
Product Code	JFT7006	JFT7007	JFT7008	JFT7010	JFT7012

\* Only for export

# Dual (Cemented) Abutment

- Available in a selection of diameters and heights.
- Material - grade4 titanium
- Used for making the general cement type of the prosthetics.
- Recommended Tightening Torque : 30Ncm
- Use a 1.2 Hex driver



## D Ø4.5 HEX 2.5



Gingival Height			1.0	1.5	2.5	3.5	4.5	5.5
Hex	Height	5.5	MSDAH45105	MSDAH45155	MSDAH45255	MSDAH45355	MSDAH45455	MSDAH45555
		7.0	MSDAH45107	MSDAH45157	MSDAH45257	MSDAH45357	MSDAH45457	MSDAH45557
Non-Hex	Height	5.5	MSDAN45105	MSDAN45155	MSDAN45255	MSDAN45355	MSDAN45455	MSDAN45555
		7.0	MSDAN45107	MSDAN45157	MSDAN45257	MSDAN45357	MSDAN45457	MSDAN45557

## D Ø5.0 HEX 2.5



Gingival Height			1.0	1.5	2.5	3.5	4.5	5.5
Hex	Height	5.5	MSDAH50105	MSDAH50155	MSDAH50255	MSDAH50355	MSDAH50455	MSDAH50555
		7.0	MSDAH50107	MSDAH50157	MSDAH50257	MSDAH50357	MSDAH50457	MSDAH50557
Non-Hex	Height	5.5	MSDAN50105	MSDAN50155	MSDAN50255	MSDAN50355	MSDAN50455	MSDAN50555
		7.0	MSDAN50107	MSDAN50157	MSDAN50257	MSDAN50357	MSDAN50457	MSDAN50557

## D Ø5.5 HEX 2.5



Gingival Height			1.0	1.5	2.5	3.5	4.5	5.5
Hex	Height	5.5	MSDAH55105	MSDAH55155	MSDAH55255	MSDAH55355	MSDAH55455	MSDAH55555
		7.0	MSDAH55107	MSDAH55157	MSDAH55257	MSDAH55357	MSDAH55457	MSDAH55557
Non-Hex	Height	5.5	MSDAN55105	MSDAN55155	MSDAN55255	MSDAN55355	MSDAN55455	MSDAN55555
		7.0	MSDAN55107	MSDAN55157	MSDAN55257	MSDAN55357	MSDAN55457	MSDAN55557

D Ø6.0  
HEX 2.5



Gingival Height			1.0	1.5	2.5	3.5	4.5	5.5
Hex	Height	5.5	MSDAH60105	MSDAH60155	MSDAH60255	MSDAH60355	MSDAH60455	MSDAH60555
		7.0	MSDAH60107	MSDAH60157	MSDAH60257	MSDAH60357	MSDAH60457	MSDAH60557
Non-Hex	Height	5.5	MSDAN60105	MSDAN60155	MSDAN60255	MSDAN60355	MSDAN60455	MSDAN60555
		7.0	MSDAN60107	MSDAN60157	MSDAN60257	MSDAN60357	MSDAN60457	MSDAN60557

D Ø6.5  
HEX 2.5

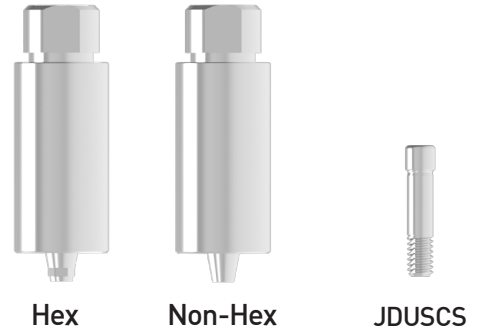


Gingival Height			1.0	1.5	2.5	3.5	4.5	5.5
Hex	Height	5.5	MSDAH65105	MSDAH65155	MSDAH65255	MSDAH65355	MSDAH65455	MSDAH65555
		7.0	MSDAH65107	MSDAH65157	MSDAH65257	MSDAH65357	MSDAH65457	MSDAH65557
Non-Hex	Height	5.5	MSDAN65105	MSDAN65155	MSDAN65255	MSDAN65355	MSDAN65455	MSDAN65555
		7.0	MSDAN65107	MSDAN65157	MSDAN65257	MSDAN65357	MSDAN65457	MSDAN65557

# Custom Abutment



- Customized by milling process to make prosthetics
- Material - Ti-6AL-4V-ELI
- Use a Hex driver
- Abutment screw(JDUSCS) is included in the package



**D Ø10  
HEX 2.5**

Product Code	
Hex	JDUSCA10
Non-hex	JDUSCA10N

**D Ø12  
HEX 2.5**

Product Code	
Hex	JDUSCA12
Non-hex	JDUSCA12N

# Lab Analog



- Implement the abutment on the working model
- Material - Ti-6AL-4V-ELI



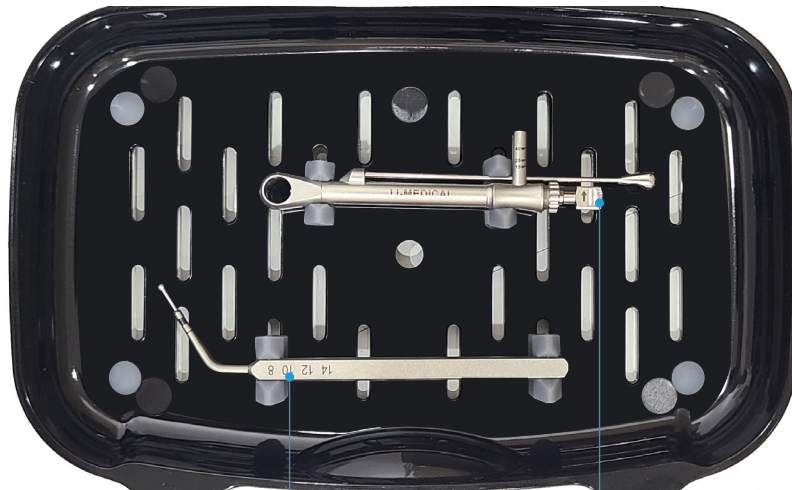
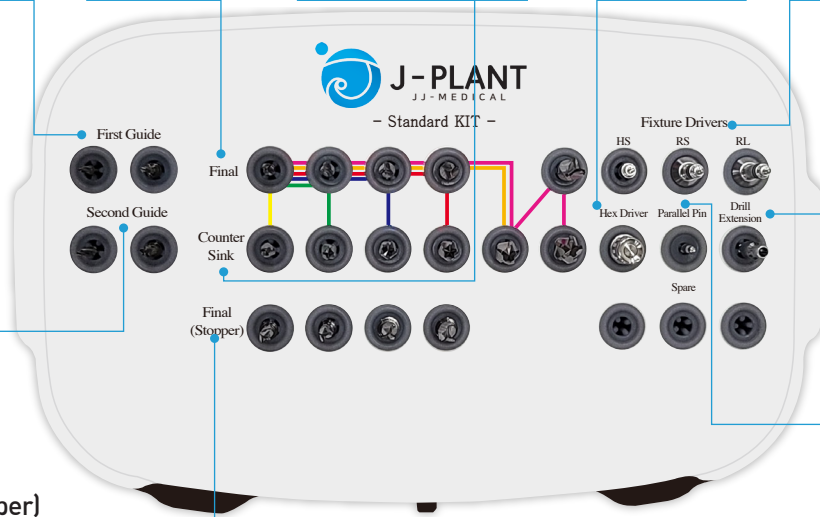
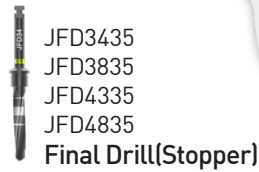
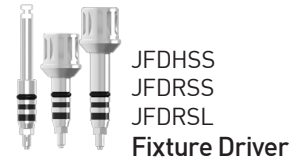
**HEX 2.5**

Product Code
JAN38

# Standard KIT Contents



## JJSK01



# Surgical Instruments



## First Guide Drill



It can mark the location for installation and facilitate the initial drilling process.

Product Code

JLD2229 JLD2235

It widens and deepens the hole created by the guide drill to form the final space for implant placement.

## Second Guide Drill



It can be used to enlarge and shape holes in the bone.

Product Code

JLD2629 JLD2635

## Final Drill



Product Code

JFD3429 JFD3829 JFD4329 JFD4829 JFD5831

## Final Drill(Stopper)



Product Code

JFD3435 JFD3835 JFD4335 JFD4835

## Counter Sink Drill



Product Code

JCS3629SW JCS4029SW JCS4529SW JCS5029SW JCS6029SW JCS7029SW

It widens and deepens the hole created by the guide drill to form the final space for implant placement. (can be used with stopper)

It can be used to prevent damage to cortical bone and ensure even distribution of stress to surrounding bone tissue.

## Drill Extension



Product Code

JDE00

It can be used when extension of drill length is required when drilling.

## Parallel Pin



Product Code

JDE00

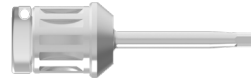
Used to check the direction and position of bone preparation.

# Surgical Instruments



## Hex Driver

It can be used for connecting of detaching the cover screw and adjustment screw.



Product Code  
JHD128

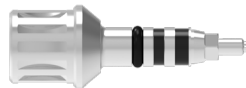
## Fixture Driver

Used instead of a fixture mount to connect the fixture to the handpiece and ratchet during implant surgery.



FOR HANDPIECE

Product Code  
JFDHSS



FOR TORQUE WRENCH

Product Code  
JFDRSS



FOR TORQUE WRENCH

Product Code  
JFDRSL

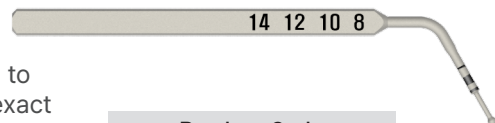
## Torque Wrench



It can be used to measure the exact torque of the implant.

Product Code  
JTQRW1

## Depth Gauge



It can be used to measure the exact depth of the hole.

Product Code  
JDG00





610, B-dong, 119, Gasan digital 1-ro, Geumcheon-gu, Seoul, Republic of Korea

Tel. +82 2 6933 4897

Web. [www.jjmedical-dental.com](http://www.jjmedical-dental.com)